



Service Bulletin Jaw Replacement Sept 27, 2013

Caution: Safety glasses or goggles should be worn when replacing the jaw assembly. Use work table or bench, if possible.

Read through all of the instructions before starting the replacement process.

Tools required to replace jaws used with straight blade link arms:
3/4" and 9/16" wrench, straight blade screwdriver, small mallet or hammer

Tools required to replace jaws used with clevis link arms:
medium size needle nose pliers, straight blade screwdriver, small mallet or hammer



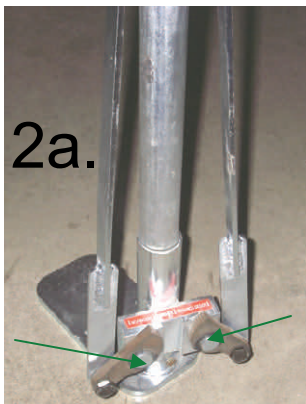
CA0010 kit for use with straight link arms. JJ0100 and JJ200 series models.



CA0006 kit for use with clevis link arms. JJ0300, JJ0400, and JJ0500 series models.

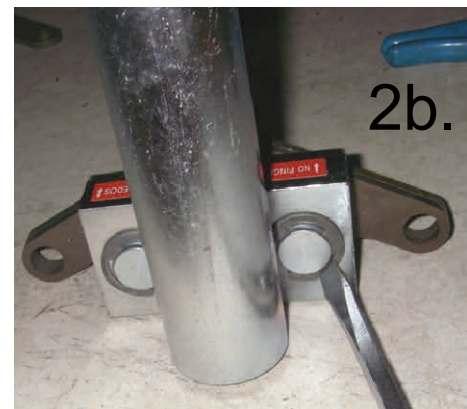
Removal of Old Jaw Set

1. Removal of the link arms from the jaws
 - A. Straight Blade Link Arms: Use the wrenches to remove the nut from the back of black bolt
 - B. Clevis Link Arms: Use needle nose pliers to remove the cotter pin from back of clevis pin
2. Pry off the e-clip from the back side of the pivot bolt using a medium size straight blade screwdriver. **CAUTION:** The e-clip is made from spring steel and, if not captured, can fly a long distance. Put your hand over the e-clip while you are prying it off to capture the e-clip.
3. Slide the old pivot pins out of the slide block assembly. Discard or save as emergency spare parts.



2a. Remove bolts or pins that hold link arms to jaws.

2b. Use medium straight blade screwdriver to pry e-clips from back-side of pivot pins.



Installation of New Jaw Set

1. Push a new pivot bolt through one of the new jaws.
2. Push the pivot bolt into the front side of the slide block. Make sure that the jaw teeth are facing toward the front center middle of the slide block assembly. See below.
3. Repeat steps 1. and 2. for the other two jaws. Make sure that the teeth are facing the other set of jaws.
4. Turn the slide block assembly around so that the grooves on the pivot bolts are visible.
5. Push a new e-clip onto the groove. Tap the e-clip into the groove with a small mallet or hammer until it is fully seated in the groove.
6. Repeat for the other side.
7. Reattach the link arms to the jaws
 - A. Straight Blade Link Arms: Use the black bolts and silver nuts. Use wrenches to tighten the nuts. Repeat for both sides. Make sure that the jaw teeth are facing each other.
 - B. Clevis Link Arms: Use the clevis and cotter pins. Insert the cotter pin through the back side of the clevis pin. Repeat for both sides. Make sure that the jaw teeth are facing each other.

Jaw replacement is finished! You are now ready to pull more stakes, rods and sign posts!

If you have any questions or problems, call Bob Anderson at 937-609-8937 or email him at Bob@JackJaw.com for help with this procedure.



Properly seated e-clip.

Properly installed jaws. View from front side.



7. Straight link arms: Use bolt and nut to reattach link arms to jaws. Tighten nut with wrenches. Clevis link arms: Insert clevis pin through jaws and link arms. Insert new pivot pin through clevis pin.